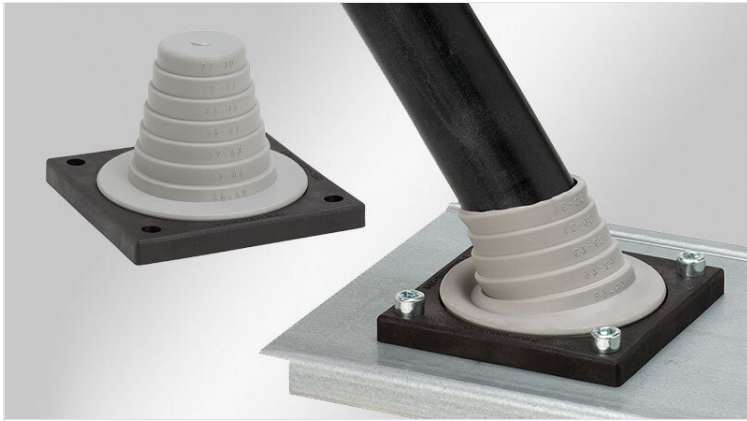


KEL-JUMBO flex pyramid cable entry grommets

for single cables with diameters up to 68 mm / IP54 / UL Type 12



The KEL-JUMBO flex is a flexible cable entry grommet for cables without connectors with a diameter range from 27 - 68 mm. They are ideal for the routing supply cables into the switch cabinets.

Cutting of KEL-JUMBO flex grommets: Cable diameter less 25%. The corresponding diameters are marked on the grommet.

It is recommended that additional strain relief be provided for cables using cable ties.

IP54

UL TYPE
12

C_{RU}US

RIIA

HL3
EN 45545-2

EN 61373

ECOLAB
certified

UV
ISO 4892-2A

RoHS
compliant

REACH
COMPLIANCE

Made in
Germany

Specifications

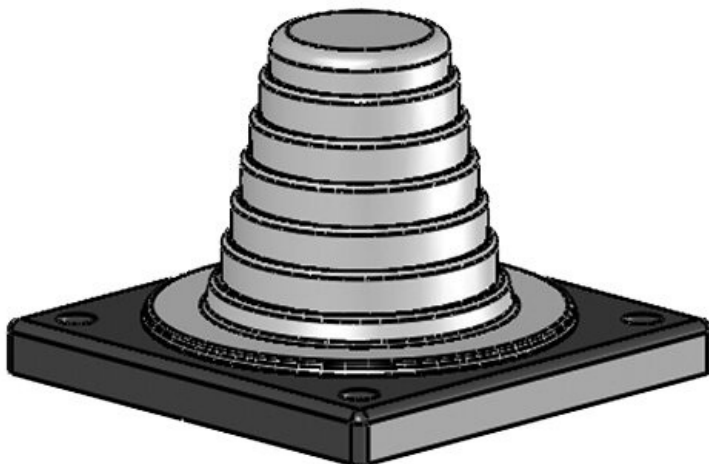
IP rating (EN 60529)	IP54
UL Type (UL 50E)	UL Type 12
Material	Elastomer Base frame: Polyamide
Flame class	UL94-V0, self-extinguishing
Operating temperature	-40 C° to 100 C°
Properties	halogen free, silicone free
Mounting options	Screw type mounting

Advantages & benefits

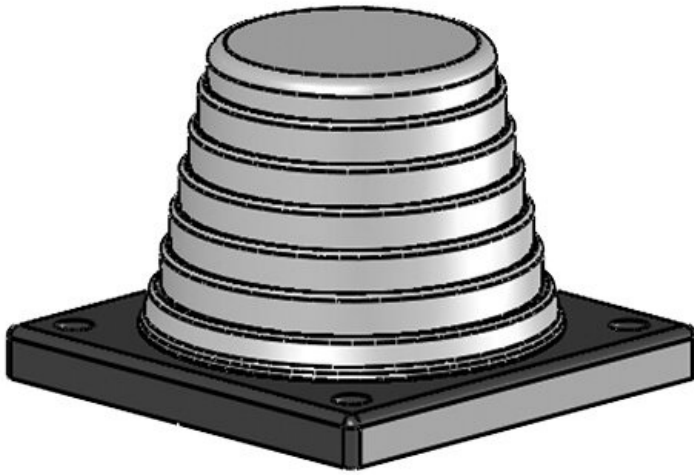
- It is possible to install rigid cables at angles
- Compact installation area (88 × 88 mm)

Product types & sizes

KEL-JUMBO flex 27-48 gy



Part No.	42614	Width	88 mm
EAN	4251269309	Height	62 mm
	021	Mounting height	62 mm
Package quantity	1	Cut-out size, round	57,6 mm
For max. no. of cables	1	No. of screw holes	4
Max. cable diameter	48 mm	Diam. of screw holes	6,9 mm
Colour	grey (similar RAL 7035)	Clamping range	1 x 27 - 48 mm
Length	88 mm		



Part No.	42616	Width	88 mm
EAN	4251269309038	Height	62 mm
Package quantity	1	Mounting height	62 mm
For max. no. of cables	1	Cut-out size, round	75,5 mm
Max. cable diameter	68 mm	No. of screw holes	4
Colour	grey (similar RAL 7035)	Diam. of screw holes	6,9 mm
Length	88 mm	Clamping range	1 x 47 - 68 mm